

Sidmouth Primary Care Improvement Project



Proposed Image

This is what we are proposing and why

We want to extend the Beacon Medical Centre and move the centre of town branch surgery from Blackmore Health Centre to Sidmouth Hospital.

We are doing this because we have no free clinical rooms and need more space. More and more services are now being delivered in the community. This means that there is less need for some people to go to hospital.

We are working with local practices in Primary Care Networks to provide more services and need additional space to do this. We are keen to expand our training and research roles and need room to do so. We are struggling to recruit new staff to our teams with the current set up.

Blackmore Health Centre is no longer fit for purpose. It is an old building and not well suited for modern healthcare facilities.

We intend to have a base at the hospital in the town centre which would allow us to integrate primary care and hospital services while continuing to offer a service in the centre of Sidmouth.

Sidmouth Primary Care Improvement Project

These are the anticipated benefits for our patients

The move will allow the Practice to expand its range of services and offer a better environment in which to see patients. The scheme will increase capacity to meet existing and future population needs.

By working with the hospital team we hope to reduce unnecessary admissions to hospital and help get people home promptly.

This scheme will help us recruit doctors and nurses to future proof primary care services in the Sid Valley.

The proposal

The works at the Beacon involve the construction of a new two-storey extension to the existing building creating an L shaped building. On the hospital site two rooms have been identified for exclusive use by the practice and other rooms will be available on an ad hoc basis. There is more information available on our website:

<http://www.sidvalleypractice.nhs.uk/spcip/>

Design principles & concept

In approaching the design it has been key to ensure any extension enhances the existing facility and does not compromise the functionality of the layout.

As such the plan has been carefully arranged to maintain the existing entrance and extend the current waiting area to ensuring ease of circulation for patients whilst maintaining operational flexibility. All rooms will meet current NHS guidance in terms of size and equipment.

We are mindful the Beacon extension is in a residential area. As such the form and detailing of the building follows the language already established by the current design with traditional pitched roofs, brickwork and render with more contemporary glazed elements. The building also steps down to single storey adjacent to Sedemuda Road thereby minimising the impact on neighbouring properties.



First Floor



Ground Floor

Why the hospital Site?

From previous patient engagement we are aware of the strength of feeling in favour of a presence being maintained in the centre of town.

Will I be able to park at the hospital?

We are planning on retaining our patient car park so arrangements for parking should not change.

Would I still get to see my doctor?

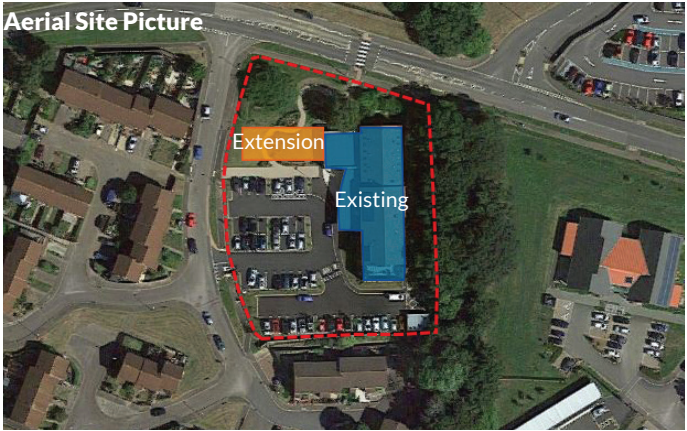
Yes all GPs who hold lists would have appointments available in Sidmouth Victoria Hospital.

I am housebound, would someone still be able to come and see me at home?

Arrangements for home visiting patients would not change under this scheme.



Aerial Site Picture



Existing Surgery



Sidmouth Primary Care Improvement Project

What happens next

We will collect feedback from the public consultation and reflect on this. It is important we have the views of our patients to be considered by the planning department.

How can patients have their say

We should like your feedback on our plans. You can contact us by email at:

d-ccg.beacondevelopmentfeedback@nhs.net

We are encouraging everyone to complete the short survey which can be found on our practice website at:

<http://www.sidvalleypractice.nhs.uk/spcip/>

Alternatively a paper copy will be available from outside reception at Blackmore Health Centre or Beacon Medical Centre and can be returned to either facility or by post to:

**The Beacon Medical Centre
Sedemuda Road
Sidmouth
Devon
EX10 9YA**

Given the Covid situation we would strongly encourage patients to use the online option if they can.

We would like your feedback by **5pm on Friday July 31st**. Our planning application will be submitted after this date.